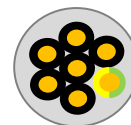
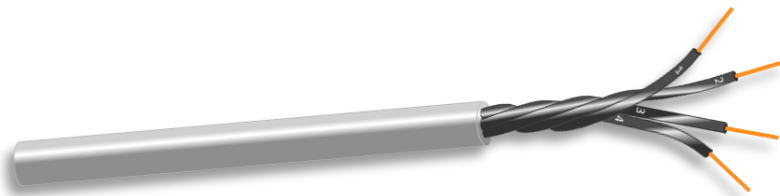


Item	HSLHFOZ15002B
Description	HSLH-OZ 2x1.50 (30x0.250) EN 50334 GREY 7001 Cca s1d1a1
Application	Flexible command and control cables in industrial environments. The CPR class Cca-s1d1a1 makes the cable suitable for indoor and fixed vertical beam laying in public buildings with a high risk of fire. Not suitable for underground installation.



Marking

HSLHFOZ15002B - PROSPECTA HSLH-OZ 2 x 1,50 300/500 V (*) Cca s1d1a1 (Metering) mt

Color Blue (*) = Lot of Production

Construction

Cores / Section		nr x mmq	2 x 1,50
Conductor	Material		Bare Copper (BC)
	Type		Stranded
	Construction	n x mm	30 x 0,25
Insulation	Material		Halogen-free LSZH T17
	Cores Identification		All black cores with numbers
	Standard		EN 50334
	Diameter	mm	2,40 ± 0,05
	Inner Conductor Resistance	Ohm/km	13,3
Cabling			Conductors cabled in concentric layers
Filler			
Jacket	Material		Halogen-free LSZH HM5
	Color		Grey RAL 7001
	Diameter	mm	6,40 ± 0,10

Weight kg / km 68,5

Technical Data

Peak Operating Voltage		Volt	250
Voltage Rating		Volt	300 / 500
Test Voltage		Volt (Ac)	2000
Insulation Resistance		MOhm / km	> 200
Temperature Range	Fixed Installation	°C	- 15 / + 70
	Mobile Installation	°C	- 5 / + 70
Minimum Bending Radius	Fixed Installation		10 x Diameter
	Mobile Installation		20 x Diameter

Standards

Fire Behaviour (according to EN 50575)	Euroclass Cca s1d1a1
DOP Nr.	F005
Inner Conductor Resistance	EN 60228 Class 5

Product Manager
(Davide Eng. Bagnacani)

Issue date 30/06/2017
Version 30/06/2017
Print date 27/03/2020

PROSPECTA s.r.l. Special Cables

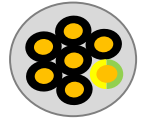
Via Giacomo Balla, 24 - 42025 Cavriago (RE) - ITALY - Tel.: +39 0522 946182/3
Foreign Market E-mail: export-sales@prospectasrl.it
Mercato Nazionale E-mail: sales@prospectasrl.it

web: www.prospectasrl.it

817

HSLH-JZ/OZ (EN 50334)

Item	HSLHFOZ25002B
Description	HSLH-OZ 2x2.50 (50x0.250) EN 50334 GREY 7001 Cca s1d1a1
Application	Flexible command and control cables in industrial environments. The CPR class Cca-s1d1a1 makes the cable suitable for indoor and fixed vertical beam laying in public buildings with a high risk of fire. Not suitable for underground installation.



Marking

HSLHFOZ25002B - PROSPECTA HSLH-OZ 2 x 2,50 300/500 V (*) Cca s1d1a1 (Metering) mt

Color	Blue	(*) = Lot of Production
-------	------	-------------------------

Construction

Cores / Section		nr x mmq	2 x 2,50
Conductor	Material		Bare Copper (BC)
	Type		Stranded
	Construction	n x mm	50 x 0,25
Insulation	Material		Halogen-free LSZH T17
	Cores Identification		All black cores with numbers
	Standard		EN 50334
	Diameter	mm	3,00 ± 0,05
Cabling	Inner Conductor Resistance	Ohm/km	8,0
	Filler		Conductors cabled in concentric layers
Jacket	Material		Halogen-free LSZH HM5
	Color		Grey RAL 7001
	Diameter	mm	7,80 ± 0,10

Weight		kg / km	104,9
--------	--	---------	-------

Technical Data

Peak Operating Voltage		Volt	250
Voltage Rating		Volt	300 / 500
Test Voltage		Volt (Ac)	2000
Insulation Resistance		MOhm / km	> 200
Temperature Range	Fixed Installation	°C	- 15 / + 70
	Mobile Installation	°C	- 5 / + 70
Minimum Bending Radius	Fixed Installation		10 x Diameter
	Mobile Installation		20 x Diameter

Standards

Fire Behaviour (according to EN 50575)		Euroclass	Cca s1d1a1
DOP Nr.			F005
Inner Conductor Resistance			EN 60228 Class 5

Product Manager
(Davide Eng. Bagnacani)

Issue date 30/06/2017
Version 30/06/2017
Print date 07/12/2022



PROSPECTA s.r.l. Special Cables
Via Giacomo Balla, 24 - 42025 Cavriago (RE) - ITALY - Tel.: +39 0522 946182/3
Foreign Market E-mail: export-sales@prospectasrl.it
Mercato Nazionale E-mail: sales@prospectasrl.it

web: www.prospectasrl.it

